



INSTRUCTION NOTE

WILOW FIRMWARE
UPDATE

DOCUMENT

Document ID		Version	V1.0
External reference		Date	05/06/2017
Author	Aymen Jegham, Technical Support Engineer		
		Project Code	
Document's name	WILOW Firmware Update		

VALIDATION

Fonction	Destination	For validation	For info
Writer	Aymen Jegham, Technical Support Engineer	✓	
Reader	Mohamed-Yosri Jaouadi, Software Architect	✓	
Validation	Antje Jacob, quality technician		✓

DIFFUSION

Fonction	Destination	For action	For info
Reader n°1	Mohamed-Yosri Jaouadi, Software Architect	✓	
Reader n°2	Antje Jacob, Quality technician	✓	

UPDATES

Version	Date	Author	Evolution & Status
1.0	12/05/2017	Aymen Jegham	<ul style="list-style-type: none">• First version of the document





Contents

1. TECHNICAL SUPPORT	5
2. VISUAL SYMBOLS DEFINITION	6
3. WHAT DO YOU NEED FOR A FIRMWARE UPDATE ?.....	7
4. STEP ONE : CONNECT YOUR BEANDEVICE® WILOW® TO YOUR PC	8
5. STEP TWO: CONFIGURE YOUR BEANDEVICE® WILOW® IN BOOTLOADER MODE	9
6. STEP THREE: UPLOAD THE FIRMWARE ON YOUR BEANDEVICE® WILOW®	10



Disclaimer

The information contained in this document is the proprietary information of BeanAir.

The contents are confidential and any disclosure to persons other than the officers, employees, agents or subcontractors of the owner or licensee of this document, without the prior written consent of BeanAir GmbH, is strictly prohibited.

BeanAir makes every effort to ensure the quality of the information it makes available. Notwithstanding the foregoing, BeanAir does not make any warranty as to the information contained herein, and does not accept any liability for any injury, loss or damage of any kind incurred by use of or reliance upon the information.

BeanAir disclaims any and all responsibility for the application of the devices characterized in this document, and notes that the application of the device must comply with the safety standards of the applicable country, and where applicable, with the relevant wiring rules.

BeanAir reserves the right to make modifications, additions and deletions to this document due to typographical errors, inaccurate information, or improvements to programs and/or equipment at any time and without notice.

Such changes will, nevertheless be incorporated into new editions of this document.

Copyright: Transmittal, reproduction, dissemination and/or editing of this document as well as utilization of its contents and communication thereof to others without express authorization are prohibited. Offenders will be held liable for payment of damages. All rights are reserved.

Copyright © BeanAir GmbH 2017



1. TECHNICAL SUPPORT

For general contact, technical support, to report documentation errors and to order manuals, contact **BeanAir Technical Support Center** (BTSC) at:
tech-support@beanair.com

For detailed information about where you can buy the BeanAir equipment/software or for recommendations on accessories and components visit:




www.beanair.com

To register for product news and announcements or for product questions contact BeanAir's Technical Support Center (BTSC).

Our aim is to make this user manual as helpful as possible. Please keep us informed of your comments and suggestions for improvements. BeanAir appreciates feedback from the users.



2. VISUAL SYMBOLS DEFINITION

<i>Symbols</i>	<i>Definition</i>
	<i><u>Caution or Warning</u> – Alerts the user with important information about BeanAir wireless sensor networks (WSN), if this information is not followed, the equipment /software may fail or malfunction.</i>
	<i><u>Danger</u> – This information MUST be followed if not you may damage the equipment permanently or bodily injury may occur.</i>
	<i><u>Tip or Information</u> – Provides advice and suggestions that may be useful when installing BeanAir Wireless Sensor Networks.</i>



3. WHAT DO YOU NEED FOR A FIRMWARE UPDATE ?

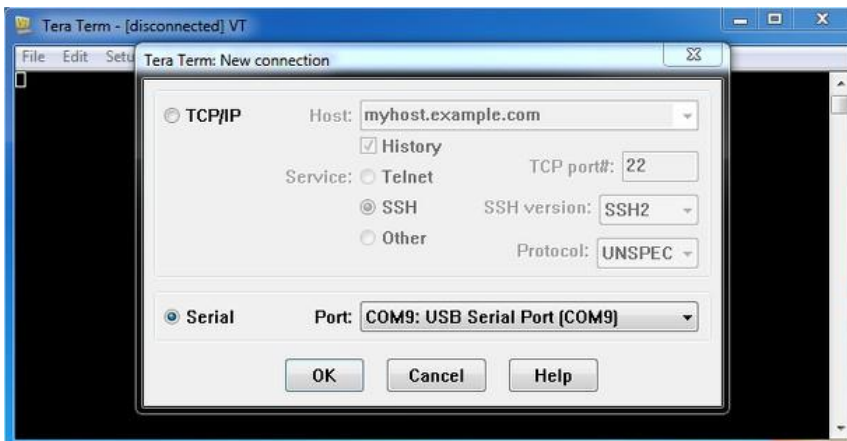
You will need the following equipment and software:

- BeanDevice® Willow® firmware available on our FTP
- M8 to USB cable provided with your BeanDevice® Willow®
- Terraterm terminal emulator. This software is on our FTP access, You can download it from here:
<https://osdn.net/projects/ttssh2/releases/>

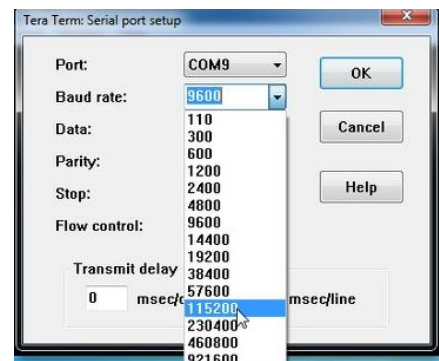
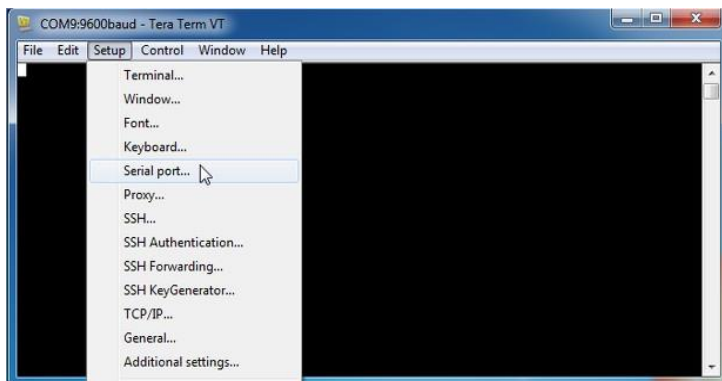


4. STEP ONE : CONNECT YOUR BEANDEVICE® WILLOW® TO YOUR PC

- Make sure that your BeanDevice® Willow® was previously powered OFF
- Connect your BeanDevice® Willow® to your USB port and run Tera Term, use the USB to M8 Cord provided with your Beandevicé® Willow®
- Start a new connection and select your BeanDevice® Willow® serial port



- Click on Setup—>Serial port and change Baud rate to 115200, then click on OK



if the USB port is not recognized try to change the PORT on your PC and avoid to use a USB Hub, connect directly the USB plug to your PC

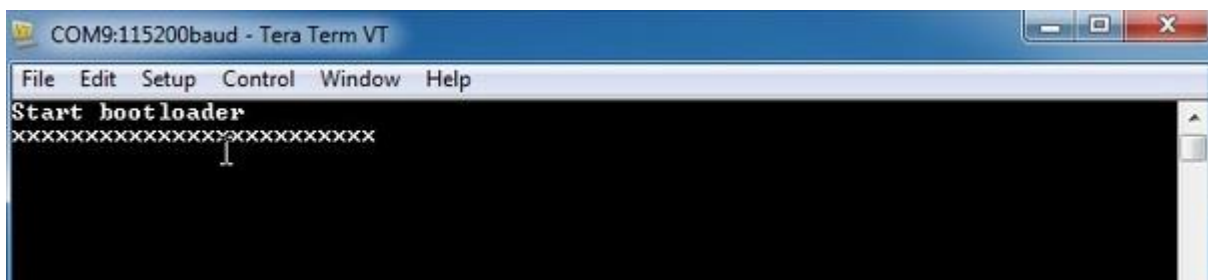


5. STEP TWO: CONFIGURE YOUR BEANDEVICE® WILOW® IN BOOTLOADER MODE

- Press X on your keyboard and simultaneously point your magnet toward The On/Off non contact button of your BeanDevice to power it On until you receive a response from the terminal displaying **Start bootloader**



On/Off Non Contact button

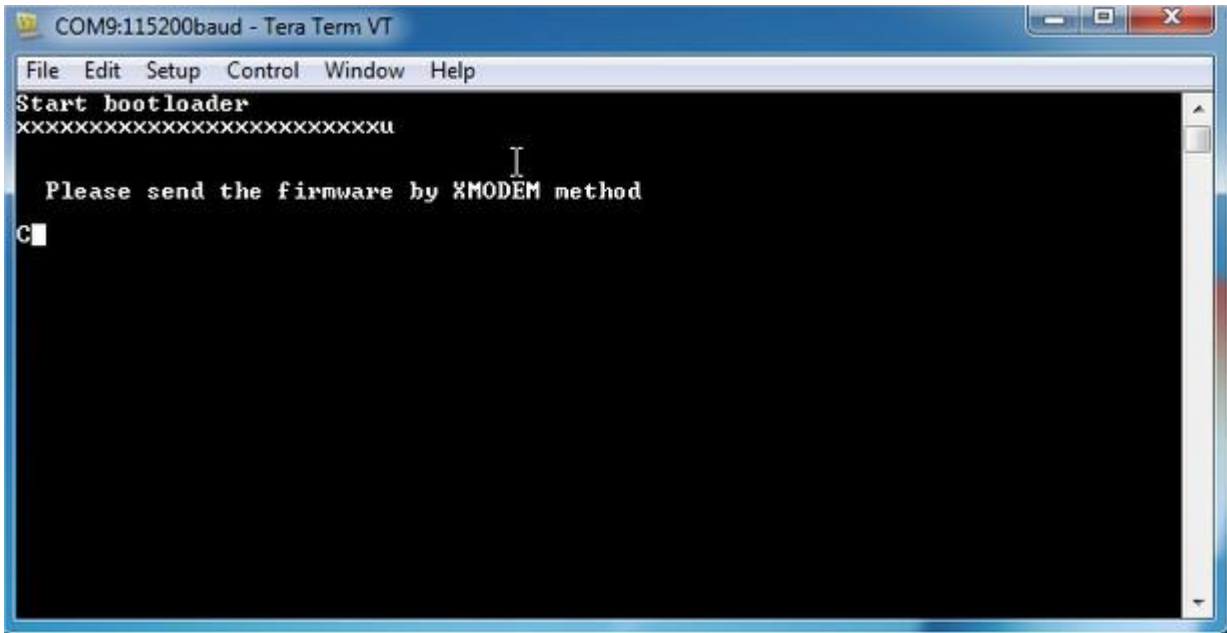


```
COM9:115200baud - Tera Term VT
File Edit Setup Control Window Help
Start bootloader
xxxxxxxxxxxxxxxxxxxxxxxxxxxxxxxx
```

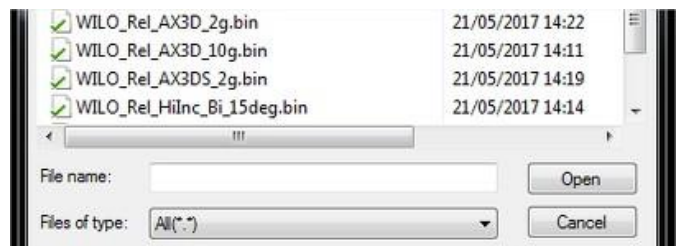
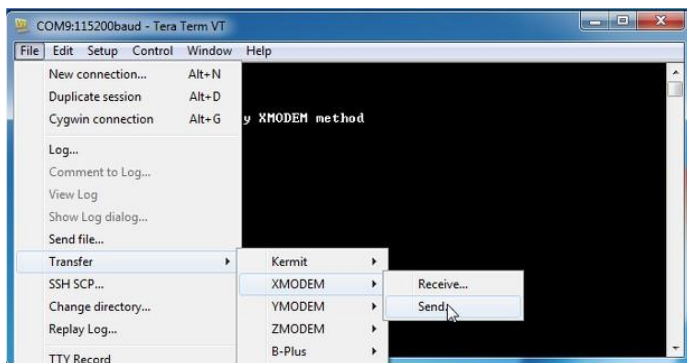


6. STEP THREE: UPLOAD THE FIRMWARE ON YOUR BEANDEVICE® WILOW®

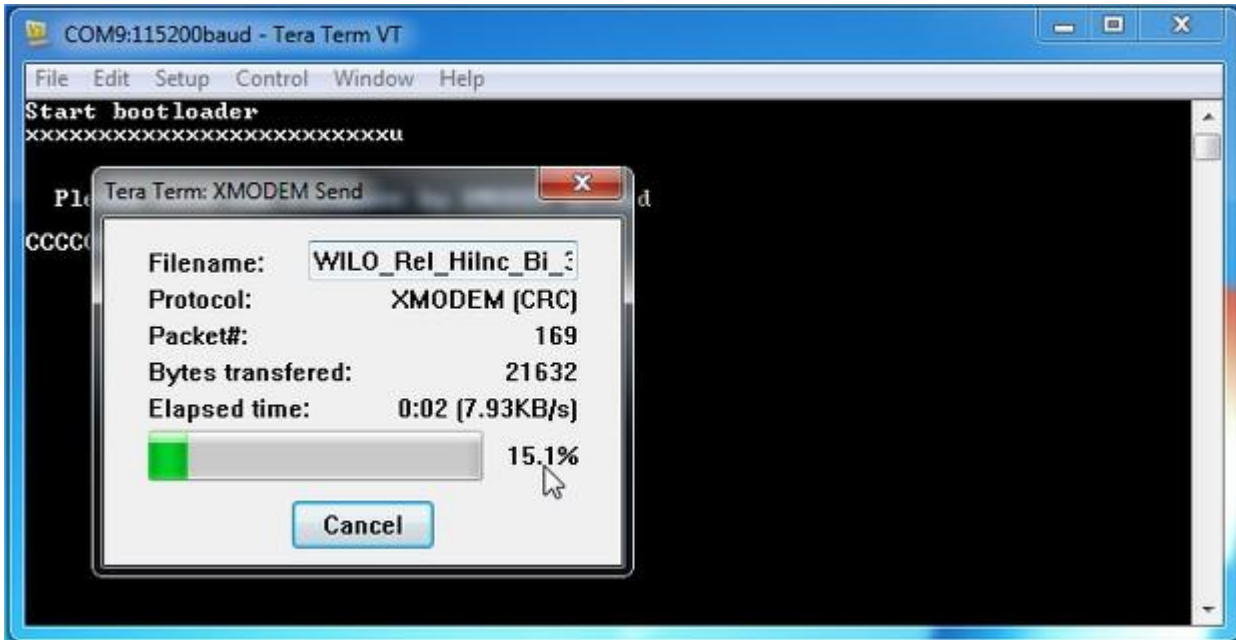
- Press U on your Keyboard and the terminal will ask you to send the new Firmware



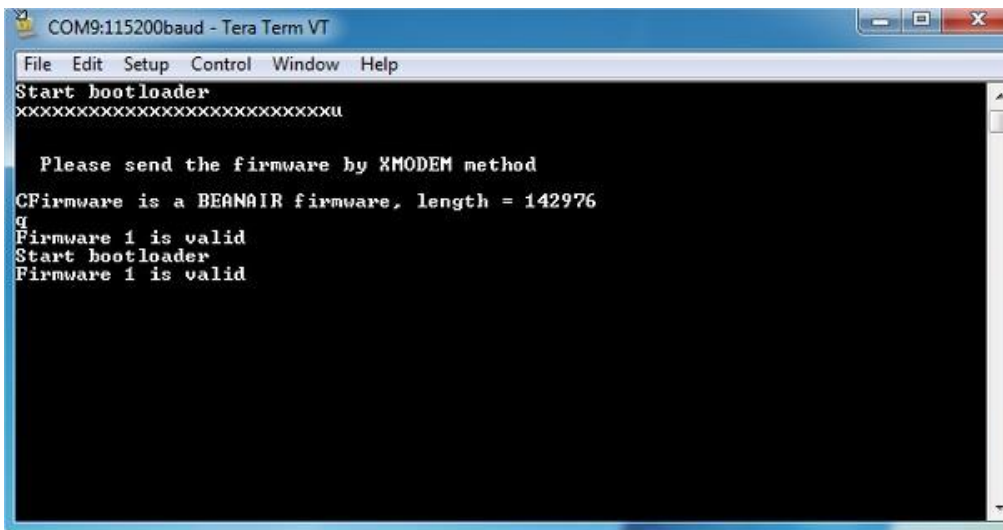
- Click on File —>Transfer—>XMODEM—>Send and browse to your folder containing the new .bin file and open it



- Tera Term starts to update the Firmware , don't interrupt the operation



- Wait until the update finish then Press Q, you should see the message "Firmware is valid". You can close Tera Term.



If you forget to press on Q, the new firmware will not be updated. You have to restart the firmware update from step 1.

